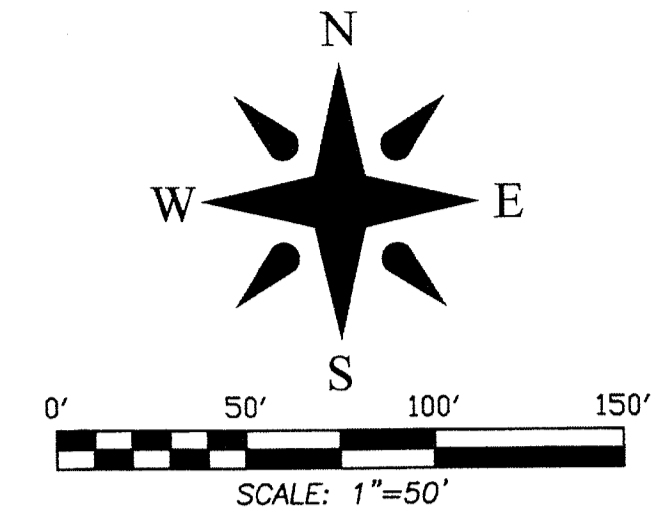
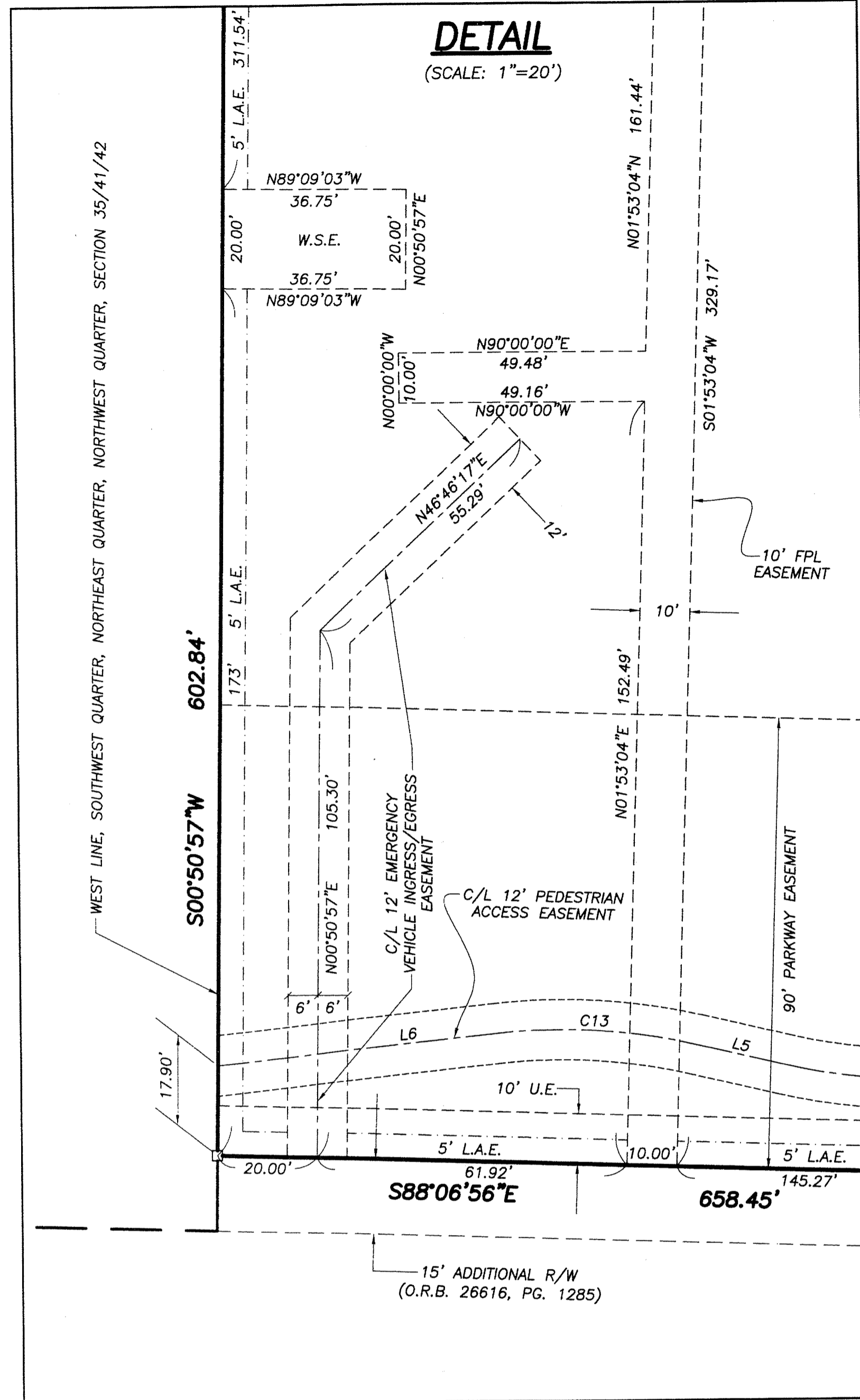


FRANKLIN ACADEMY

LYING IN SECTION 35, TOWNSHIP 41 SOUTH, RANGE 42 EAST
CITY OF PALM BEACH GARDENS, PALM BEACH COUNTY, FLORIDA



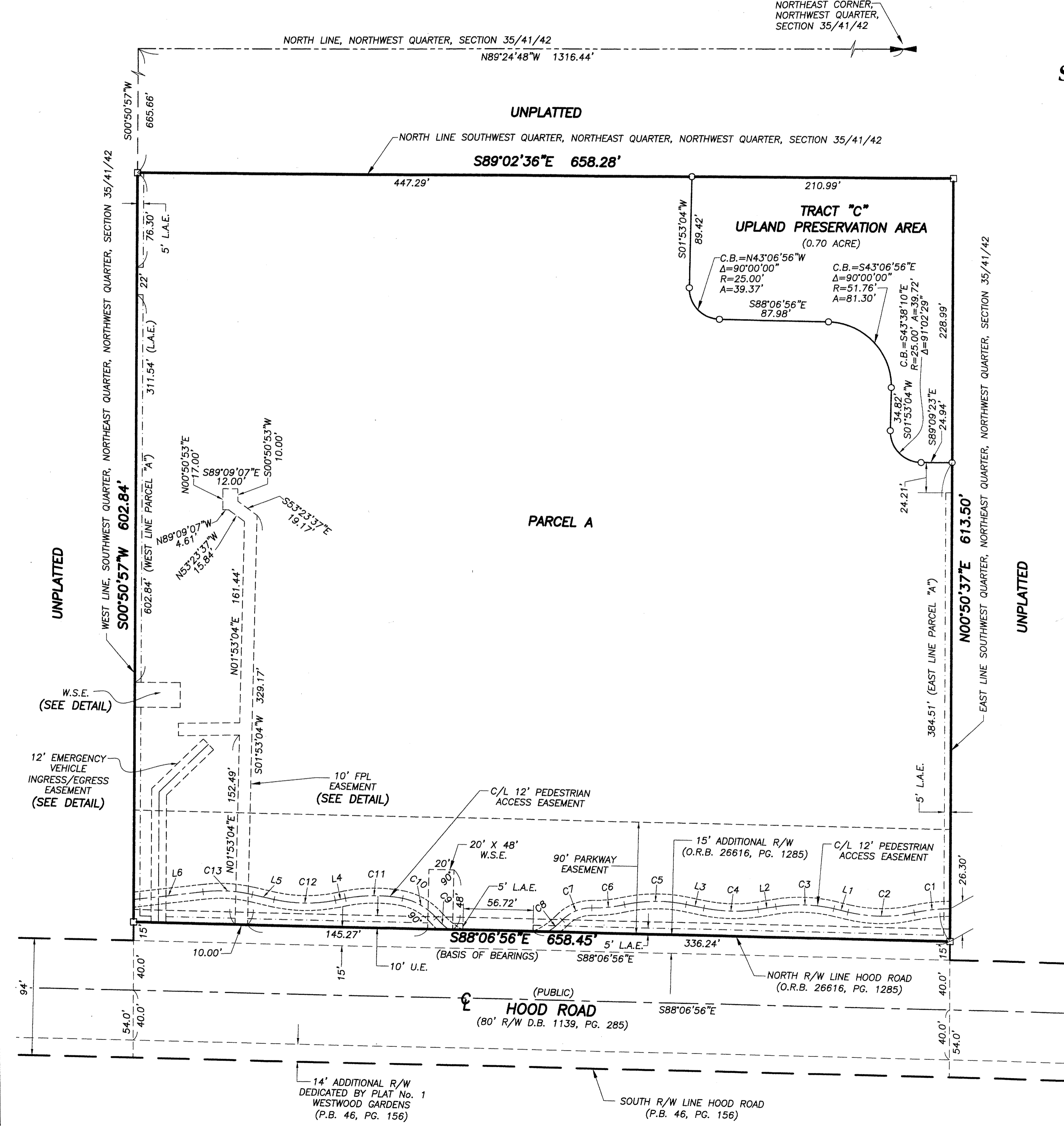
SHEET 2 OF 2



12' PEDESTRIAN ACCESS EASEMENT CURVE AND LINE TABLES

CURVE	RADIUS	ARC LENGTH	DELTA ANGLE	CHORD BEARING
C1	130.00'	29.04'	12°48'00"	N84°26'49"E
C2	120.00'	54.02'	25°47'34"	S89°03'24"E
C3	120.00'	47.07'	22°28'26"	S87°23'50"E
C4	120.00'	44.00'	21°00'33"	S88°07'45"E
C5	120.00'	49.98'	23°51'54"	S89°33'26"E
C6	123.00'	26.66'	12°25'07"	N84°43'11"E
C7	33.00'	26.56'	46°06'31"	N67°52'28"E
C8	66.00'	14.69'	12°45'25"	N51°11'55"E
C9	65.00'	13.59'	11°58'45"	S46°09'22"E
C10	48.00'	32.07'	38°16'49"	S59°18'24"E
C11	120.00'	46.25'	22°04'50"	S89°29'14"E
C12	120.00'	49.62'	23°41'26"	S88°40'56"E
C13	120.00'	40.08'	19°08'20"	S86°24'23"E

LINE	BEARING	DISTANCE
L1	N76°09'37"W	11.65'
L2	S81°21'58"W	14.58'
L3	N77°37'29"W	14.59'
L4	S79°28'21"W	8.30'
L5	N76°50'13"W	18.09'
L6	S84°01'27"W	56.28'



ABBREVIATIONS AND SYMBOLS

1. = Denotes Set Permanent Reference Monuments (P.R.M.'s) with disk Stamped "P.R.M. WALLACE LB #4569"
2. = Denotes Set 5/8" Iron Rod & Cap Stamped "WALLACE LB #4569"
3. = Centerline
4. R/W = Right of Way
5. P.B. = Plat Book
6. P.G.(S) = Pages
7. SEC. = Section
8. TWP. = Township
9. RGE. = Range
10. U.E. = Utility Easement
11. D.E. = Drainage Easement
12. D.B. = Deed Book
13. A = Arc Length
14. Δ = Central Angle
15. R = Radius
16. C.B. = Chord Bearing
17. O.R.B. = Official Record Book
18. R.P.B. = Road Plat Book
19. L.M.E. = Lake Maintenance Easement
20. S.U.A. = Seacoast Utility Authority
21. P.O.C. = Point of Commencement
22. P.O.B. = Point of Beginning
23. P.B.C. = Palm Beach County
24. W.S.E. = Water & Sewer Easement
25. L.A.E. = Limited Access Easement

PLAT OF
FRANKLIN ACADEMY

WALLACE SURVEYING
CORP. LICENSED BUSINESS # 4569
5553 VILLAGE BOULEVARD, WEST PALM BEACH, FLORIDA 33407 * (561) 640-4551

FIELD:	JOB No.: 84-530.19	F.B.	PG.
OFFICE: R.C.	DATE: JANUARY, 2014	DWG. No.:	84-530-4
C'K'D:	REF.:	SHEET 2 OF 2	

PLAT NO. 1
WESTWOOD GARDENS
(P.B. 46, PG. 156)